

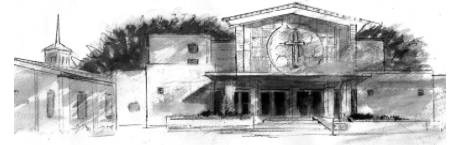


# HORIZON

monthly newsletter

## St. Luke Lutheran Church

9100 Menaul Blvd. NE, Albuquerque, NM 87112  
505.299.2621 Email: stluke@thuntek.net Website: stlukeabq.org



*Rooted in God's Word, Serving in God's World*



"I came  
that they may  
have *life*,  
and have it  
*abundantly*."

John 10:10, NRSV

**APRIL  
2026**

## ST LUKE WORSHIP SERVICES

*The Lord's Supper is shared at all weekend services.*

Nursery care available during services

Saturday at 5 PM

Sunday at 8:15 AM & 10:30 AM

Live-Stream service at StLukeABQ.org on: Saturday, April 11, at 5 PM;  
Sundays, April 5 & 26, at 8:15 AM; Sunday, April 19, at 10:30 AM

Christian Education: Sundays, *between services*

- ◆ 9:15 AM Salt & Spark Multigenerational Ensemble, in Sanctuary, followed by Godly Play, 2.5-preschool ages, in Admin. Building; Kids Spark, Kindergarten—5th grade ages, in Youth room
- ◆ 9:25 AM Adult Forum, in Zuni room

Love God, Love Neighbor: Sunday, April 19, 12:30 - 2:30 PM  
at Tres Hermanas Farm

***"Now the green blade rises from the buried grain, wheat that in the dark earth many days has lain; love lives again, that with the dead has been; love is come again like wheat arising green."*** - hymn words by John M. C. Crum

Genesis 3 describes the Garden of Eden, the place of humanity's Fall. That garden was probably in today's Iraq in the Middle East. John's Gospel describes both the Garden of Gethsemane, in northern Jerusalem, the place of Jesus' betrayal, and the location of Jesus' tomb as in a cemetery in a *garden*. Today, that tomb is under the central dome of the Holy Sepulcher Church, shuttered this year due to conflict, war, closures of the churches by the State of Israel. Saint John envisioned that we see the place of Jesus' death, the Tree of the Cross, then his resurrection, the empty grave as THE place of vibrant life returning, a return to the perfection of the Garden of Eden, what God intended. *"There will be a garden where my children play, And they can sing and dance all day Growing together to live and love as one/ A family of daughters and my sons."* – Sheila O'Connell-Roussell, in Herstory: A Mother's Tale (Musical of the life of Jesus, 1992)

In the story of Easter, the curse over all human history, from humanity's Fall, is reversed. Thus, John's Easter Gospel story takes place in a cemetery garden with Mary Magdalene even mistaking Jesus for the cemetery's gardener. The miracle of Easter is often described in images from nature, things coming up into bloom and new life emerging out of the seemingly dead soil, like wheat arising green out of the barren prairie fields.

*Continued next page*

Children's Ministries, pp 3-5, 12  
Vacation Bible Day Camp, p5  
Wellness Ministry, p 6

NEW—Stretch & Pray, p 7  
Bible Studies, p 8  
Church Council, p 9

April Celebrations, p 9  
St. Luke Preschool, p 12  
St. Luke Prays, p 14

*"Now the green blade rises from the buried grain" . . . from previous page*

I love the 19<sup>th</sup> century hymn "Now the Green Blade Rises" -words by John M. C. Crum, 1872-1958; music usually sung to the French carol, *Noel Nouvelet*. It addresses honestly those times when "our hearts are wintry, grieving or in pain." The hymn sings that God can touch them/ us and call us back to life again. Listen to the hymn's words, *"Fields of our hearts that dead and bare have been, Love is come again like wheat arising green."* The hymn helps us to celebrate the springtime of the resurrection even in times of death and loss. Christ is now alive in us. Because he lives, we shall live also. While the church is enjoying its garden images, so are we enjoying getting ready for gardening in the natural world. During these seven weeks now, the Northern Hemisphere gets adorned with crocuses, lilies, daffodils, tulips, azaleas, budding redbud trees, flowering plum trees, and, finally, roses. My trees have budded and are blooming. The desert grasses are coming alive out of dormancy. Potted flowers are poking up their heads. The spring marches by us in one bunch of flowers after another. Days are warming, days are lengthening. We are beginning to move outside, to plan our own gardens, to tend to our yards, to cook and eat out on the patio, to pack away winter clothes.

It is in the midst of death that we hear promises of resurrection new life. It is in the midst of our experiences of death that we may yet see the promises of new life through the eyes of faith. When the songs of death perch on our doorsteps, Jesus invites himself into our stories with a word of new life, life like "wheat arising green." Even amid the still brown, desert- dry winter landscape of our grieving hearts, we can recognize the Easter garden when we see it, and we can point each other to the budded, flowering Tree of Life, the Cross of Jesus' victory and the Empty Tomb, sign of the promise of new life that saves us. No wonder the church sanctuaries during Eastertide look very much like a garden blooming. Happy gardening this season! May your life and your faith bloom and bear witness to God's grace, love, and blessings. Remember the Easter promises and your baptismal identity; then go, love, and serve the Lord in all you do and say.

- Faithfully yours, The Rev. Dr. Brad Brauer, Interim Pastor

*"In the grave they laid him, love by hatred slain. Thinking that he would never wake again. . . (But) Forth he came at Easter, like the risen grain. He that for three days in the grave had lain, raised from the dead, my living Lord is seen; Love has come again like wheat arising green."*

# April Sunday School Announcements

## Godly Play

Our stories this month are:

- 4/5: EASTER! No class. See you at the Easter Egg Hunt and brunch!
- 4/12 - Parable of the Pearl
- 4/19 - Parable of the Fishernet
- 4/26 - Jesus Feeds the 5000

Special thank you to Ms. Judy for joining us as doorkeeper and storyteller! Thank you to our families who bring all the yummy snacks to share!

## Kids SPARK

April Lessons:

- 4/5: EASTER! No class. See you at the Easter Egg Hunt and brunch!
- 4/12: Doubting Thomas
- 4/19: Road to Emmaus
- 4/26: Early Believers

We look forward to seeing you all at the Maundy Thursday service where some of you will receive your first communion, perform in the ensemble and help strip the altar!

## Confirmation

Weekly Confirmation instruction will not begin until Sunday School (9:15-10:15 am) starts in September 2026

Be on the lookout for an email from Tom with information on your next pre-confirmation meet-up.

## Youth Group

Save the Date!  
ELCA Youth Gathering  
June 28-July 2<sup>nd</sup>, 2027  
Grades 8-12th

Thank you for being our bunnies for the Easter Egg hunt!

Final LGLN event is April 19<sup>th</sup> at Tres Hermanas Farm. See Allie for more information

# LOVE GOD LOVE NEIGHBOR

ABQ YOUTH COLLABORATIVE

## TRES HERMANAS FARM

Sunday, April 19th,

12:30-2:30pm

1701 Tierra Viva Pl NW, Albuquerque NM 87107



We will meet at the Los Poblanos Fields Open Space to help with their planting season! Wear comfortable clothes, close toed shoes, gloves and hats. Snacks and water will be available.

Please RSVP to Allie ([stluke.abrandt@gmail.com](mailto:stluke.abrandt@gmail.com)) by April 12th. This event is open to youth grades 6-12, their friends and guardians!



### A little about Tres Hermanas:

Tres Hermanas is a program of Lutheran Family Services Rocky Mountains Refugee & Asylee programs in Albuquerque.

Empowering New Americans through our agricultural programming—providing resources, education, and training to cultivate self-sufficiency, community integration, and strengthen cultural food security within New Mexico's food landscape





# VACATION BIBLE CAMP 2026

RAINBOW TRAIL LUTHERAN CAMP

# DAY CAMP

HANDS WIDE OPEN

Philippians 4:6-7



**JUNE 22- 27 2026**  
**8:45 AM - 11:30 AM**  
**AGES K- 5TH GRADE**

**NON-CHURCH MEMBERS AND  
FRIENDS ARE WELCOME**



## REGISTRATION QR CODE

**\$10 REGISTRATION FEE**  
(COVERS T-SHIRT & CRAFTS SUPPLIES)



**Volunteer needed for arts and crafts,  
chaperones, junior counselors, snacks and more!**

Please contact Allie Brandt at  
stluke.abrandt@gmail.com or  
use the QR code to sign-up



# Is it Time for a Wellness Check-up?

By Jerry Aaker, Wellness Committee

Most of us have experienced a personal wellness check-up when a health-care provider carries out various tests and asks many questions about our health history and current condition for the purpose of developing a plan for healthy and active living. Could our congregation also benefit from a wellness check-up?



When we as members give attention to our personal well-being, we are more able to have the strength, motivation, and compassion for doing God's work and carrying out our mission as the body of Christ. Note that Paul uses the metaphor of the Body of Christ for the Church. (1 Corinthians 12;12-31). This is a very effective way for the Church to understand itself as the means by which Christ is present and active in the world. We are reminded that we need each part of the body to function well; in other words, each unique gift and ability is valued.

Wellness is multi-dimensional and unique for each individual and for each congregation. Portico, the retirement and health insurance organization for ELCA pastors and church workers, uses the Wellness Wheel to illustrate the interrelationships between seven dimensions of well-being for the congregation as a corporate body — vocational, intellectual, emotional, physical, social/interpersonal, and financial, and for the church, especially, spiritual well-being.

Congregations have unique personalities. As a collection of people at a particular time and place we have multiple gifts and talents.

If our congregation were a person doing an annual check-up, what areas of concern might you raise with a doctor? How well is our congregation doing in each of the components of this wheel?

There are also ways to consider wellness that may not fit neatly into the above categories. St Luke has a strong tradition and appreciation for music and art, and we are continuously blessed with the inspiration that comes from music and art in worship and other spaces. Engaging in and/or just appreciating these creative forms can have many benefits, such as reducing anxiety, nurturing self-expression, fostering peacefulness in times of illness or loss, and increased awareness of the presence of God's Spirit in our lives.

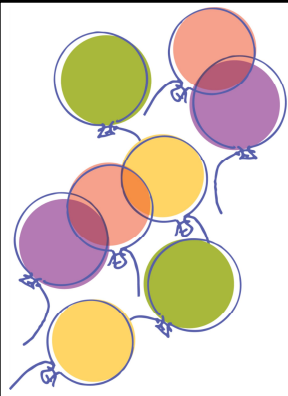
The Wellness Committee is looking at wellness with this holistic emphasis. We are thinking about what this could mean for St Luke church and invite members and staff for input and ideas. What actions do you think might be good and helpful for individuals, for the congregation and for our neighbors? Please consider joining in occasional conversations about wellness with the Committee over coffee. Talk to one of us, Cindy Callisto, Betty Beagel, Jerry Aaker, or Pastor Brad to share your comments, interests and suggestions of wellness activities.

## Introduction to Stretch and Pray

Years ago, ELCA pastor Murray D Finck discovered the benefits of daily stretching and quiet prayer done in several body positions. For him, chronic backpain that had plagued him for twenty years disappeared. His book, titled *Stretch and Pray: A Daily Discipline for Physical and Spiritual Wellness*, is a guide to a variety of stretches, movements, and prayer postures to improve physical and spiritual well-being.

As a practitioner of *Stretch and Pray* for over 20 years, I have found this daily practice valuable on a personal level. I will be offering sessions to introduce stretch and pray in the fellowship hall at 4 PM on April 8th and 9th. Some yoga mats will be available, but if you have your own, please bring it. If you are unable to get down on the floor, stretches can be adapted for specific needs and limitations. Contact me if you want to know more.

- Jerry Aaker



## Congratulations to Math Counts Team!

*Message from Coach Judy Moore*

Since we held a lot of practices in the Zuni room, I thought you would like to know that my team won! This now makes me the coach of the NM team (one from my team's school Desert Ridge, 1 from Los Alamos, 1 from the Academy and 1 from Eisenhower) and we go to Orlando on Mothers' Day weekend.

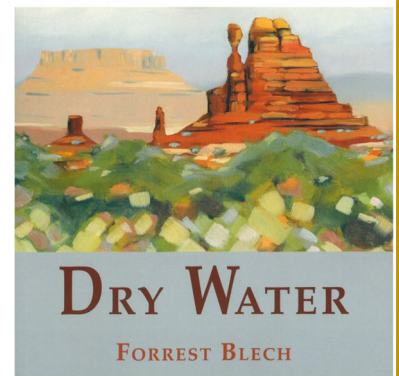
Thank you, St. Luke church, for your support by providing a room for our practice sessions.

## Dry Water

Book written by our very own Forrest Blech, published February 17, 2026.

*"Dry Water by Forrest Blech is a collection of essays, a modest sketch of the sandstone world of Southern Utah, its human history from about 1850 to the present, with paintings attentive to the element which has forged its terrain, governed its settlement, and dictated enduring respect: water. It's Forrest's reflections on place, memory, and resources over the past six decades."*

*"In its union of the written word and visual art, this collection by Forrest Blech presents a reflection on place, memory, and resources in one of the American West's most distinctive landscapes." (excerpts of the synopsis printed on the book's back cover)*



To purchase and start your reading adventure:

⇒ **Order from the Blechs.** Call (505) 410-7387 or email [FrostyRhonda@gmail.com](mailto:FrostyRhonda@gmail.com). Cost: \$20.00 per copy. Proceeds from orders placed directly with the Blechs will be donated to St. Luke Lutheran Church. Order by May 15, 2026.

⇒ Also available at [Amazon.com](https://www.amazon.com)

Sun

Mon

Tue

# April



# 2026

## 5 RESURRECTION OF OUR LORD

Nursery care available during services  
No Sunday classes  
**8:15am** Worship Service & Simultaneous Live-Stream at [StLukeABQ.org](http://StLukeABQ.org)  
**9:15am** Easter Brunch in the Fellowship Hall  
**9:15am** Egg Hunt Youth helpers, meeting with Coordinators in Youth room  
**9:45am** Egg Hunts: Preschool-Kinder in Preschool Playground; First-fifth graders in Courtyard  
**10:30** Worship Service

## 6 Easter Monday

Church Office closed

7

**9:50 am** Preschool Music Classes in Taos Room

**3:30-5:30pm** Preschool Staff meeting in Fellowship Hall

## 12 EASTER 2

Nursery care available during services /classes  
Coffee Fellowship after each service  
**8:15am** Worship Service  
**9:15am** Kids Spark and Godly Play start in the Sanctuary  
**9:25am** Adult Forum in Zuni Room  
**10:30am** Worship Service

13

**9:15am** Preschool Music Classes in Taos Room

14

**9:50am** Preschool Music Classes in Taos Room

**5pm** Contemplative Group Spiritual Direction led by Jerry Aaker, in Lounge/Library

## 19 EASTER 3

Blessing of Eucharistic Visitor  
Communion Kits at each service  
Nursery care available during services /classes  
Coffee Fellowship after each service  
**8:15am** Worship Service  
**9:15am** Kids Spark and Godly Play start in the Sanctuary  
**9:25am** Adult Forum in Zuni Room  
**10:30am** Worship Service & Simultaneous

20

**9:15** Preschool Music Classes in Taos Room

**21 9:50am** Preschool Music Classes in Taos Room

**10:30am** Finance Committee meeting on Zoom

**1:30pm** Presentation on Alzheimer's in the Fellowship Hall, by Learners & Servers

**7pm** Preschool Comm. Meeting on Zoom

## 26 EASTER 4

Nursery care available during services /classes  
Coffee Fellowship after each service  
**8:15am** Worship Service & Simultaneous Live-Stream at [StLukeABQ.org](http://StLukeABQ.org)  
**9:15 am** Kids Spark and Godly Play start in the Sanctuary  
**9:15 am** Adult Forum in Zuni Room  
**10:30 am** Worship Service

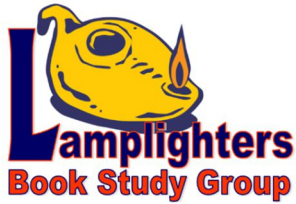
27

**9:15 am** Preschool Music Classes in Taos Room

28

**9:50 am** Preschool Music Classes in Taos Room

Wed	Thu	Fri	Sat
<p><b>1</b> Preschool Spring Break March 30-April 3</p> <p><b>2pm</b> Bells of St. Luke practice</p> <p><b>7-8:30pm</b> Sanctuary Choir rehearsal</p>	<p><b>2 HOLY THURSDAY</b></p> <p><b>12pm</b> Thursdays in Lent: Book of Romans study, in Conference room</p> <p><b>2pm</b> Lamplighters Book Study meeting in the Lounge/Library</p> <p><b>6pm</b> Maundy Thursday service</p>	<p><b>3 GOOD FRIDAY</b></p> <p><b>Noon</b> Church Office closed</p> <p><b>12 pm</b> Stations of the Cross</p> <p><b>6pm</b> Good Friday service</p>	<p><b>4 EASTER VIGIL</b></p> <p><b>5pm</b> Easter Vigil Service Nursery care available</p>
<p><b>8</b></p> <p><b>8am-12</b> Preschool Photos, Fellowship Hall</p> <p><b>10am</b> Capital Committee meeting in Conference room</p> <p><b>12pm</b> Interim Pastors' meeting on Zoom</p> <p><b>2pm</b> Bells of St. Luke practice in Sanctuary</p> <p><b>4pm</b> Stretch &amp; Pray, in the Fellowship Hall</p> <p><b>7-8:30pm</b> Sanctuary Choir</p>	<p><b>9</b></p> <p><b>8am-12</b> Preschool Photos, Fellowship Hall</p> <p><b>9:30 am</b> Preschool Worship: MARY &amp; MARTHA</p> <p><b>4pm</b> Stretch &amp; Pray, in the Fellowship Hall</p> <p><b>6:30 pm</b> Worship, Music &amp; the Arts Comm. Meeting on Zoom</p>	<p><b>10</b></p> <p><b>9:15am</b> Preschool Music Classes in Taos Room</p> <p><i>Pastor Brad out of the office April 10-13</i></p>	<p><b>11 ST. LUKE CHURCH 72nd ANNIVERSARY</b> </p> <p><b>1pm</b> Survivors of Suicide in Zuni Room</p> <p><b>5pm</b> Worship Service &amp; Live Stream Worship at StLuke-ABQ.org</p>
<p><b>15</b></p> <p><b>9:50 am</b> Preschool Music Classes in Taos Room</p> <p><b>12:30 pm</b> Staff meeting in Conference Room</p> <p><b>2pm</b> Bells of St. Luke practice</p> <p><b>7-8:30pm</b> Sanctuary Choir</p>	<p><b>16</b></p> <p>Preschool Parent/Teacher Conferences No Preschool classes</p>	<p><b>17</b></p> <p>Preschool Parent/Teacher Conferences No Preschool classes</p>	<p><b>18 AMERICA READS THE BIBLE</b>, in Washington, DC</p> <p><b>9:15-11:30am</b> Women's gather Bible study, Brunch &amp; Mini-retreat, Lounge/Library</p> <p><b>5pm</b> Worship Service Blessing of Eucharistic Visitor Communion Kits</p>
<p><b>22</b></p> <p><b>9:30am</b> Preschool Worship: Mary &amp; Martha</p> <p><b>11:25am</b> Preschool Village in Courtyard</p> <p><b>12:15pm</b> Worship Planning meeting in Conference Room</p> <p><b>2pm</b> Bells of St. Luke practice</p> <p><b>7-8:30pm</b> Sanctuary Choir</p>	<p><b>23</b> Synod Assembly, in Denver, CO</p> <p><b>9:30 am</b> Preschool Worship: JESUS &amp; THE CHILDREN</p> <p><b>11:25am</b> Preschool Village in Courtyard</p>	<p><b>24</b></p> <p>Synod Assembly, in Denver, CO</p> <p><b>Church Council meeting</b> moved to Friday, May 1, 9am on Zoom</p>	<p><b>25</b></p> <p>Synod Assembly, in Denver, CO</p> <p><b>1pm</b> Survivors of Suicide</p> <p><b>5pm</b> Worship Service Nursery care available</p>
<p><b>29</b></p> <p><b>12:30 pm</b> Staff meeting in Conference Room</p> <p><b>2pm</b> Bells of St. Luke practice in Sanctuary</p> <p><b>7-8:30pm</b> Sanctuary Choir</p>	<p><b>30</b></p>		



## Lamplighters Book Study Group

First Thursdays - next meeting: April 2, 2026  
2:00 - 3:30 PM, in the Library/Lounge

Study: Chapter 4: “The Hypocrites ” in our book, by Nancy Guthrie titled  
*“Saints and Scoundrels in the Story of Jesus”*

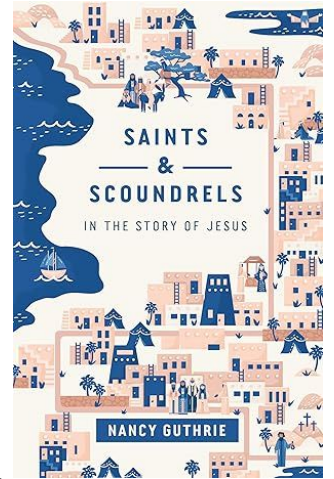
There are questions in the back of the book that will guide our discussion.

Join us! Discussion Leader: Pam Mares

Coordinator: Diane Quarles (diane.quarles@mac.com or at 505-264-5444).

“... *Saints and Scoundrels in the Story of Jesus* tells the story of 10 people or groups of people who are integral to the story of Jesus told in the Gospels. ... They are more than examples—they show us a unique angle on the grace available through Jesus for sinners. Each chapter also offers challenging applications to the lives of readers.”

- excerpt from Christianbook.com



## Women’s “gather” Bible Study, Brunch, & Mini-Retreat

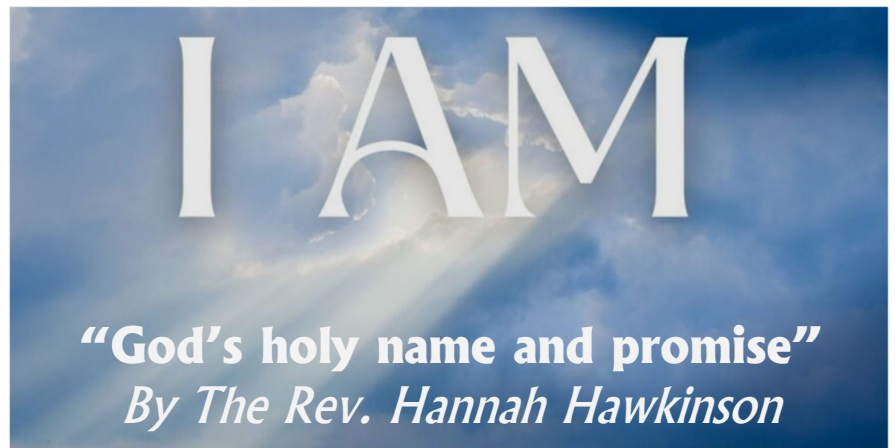
Saturday, April 18, 2026

9:15 - 11:30 AM

St. Luke Lutheran Church, Library/Lounge

### Study in April: Gate and shepherd: Guiding and protecting us (John 10)

Session two builds on the theme of God’s abiding love as we explore another dimension of I AM, God’s holy name and promise: God’s guidance and protection. Guidance and protection are the major themes of the famous “Good Shepherd” discourse in John 10, in which Jesus declares that he is both the good shepherd and the gate for the sheep. Our God who abides with us is also a God who moves with us—who knows us, protects us and leads us through the ups and downs of life.



*Invite a friend.* Bring a brunch food to share. Provide a non-perishable food item for the Storehouse.

More information: contact Bev Berardinelli at [womensbiblestudy@stlukeabq.org](mailto:womensbiblestudy@stlukeabq.org)

For more information on the Gather magazine, go online to [www.gathermagazine.org](http://www.gathermagazine.org).

# Church St. Luke Council

Email: [Council@StLukeABQ.org](mailto:Council@StLukeABQ.org)

## Highlights from the Council Meeting Scheduled in March 2026

*By Alison Schuler, President*

Dear People of God:

**And being found in appearance as a human, humbled himself and became obedient to the point of death—even death on a cross. Therefore God exalted him even more highly and gave him the name that is above every other name, so that at the name given to Jesus every knee should bend, in heaven and on earth and under the earth, and every tongue should confess that Jesus Christ is Lord, to the glory of God the Father.**

The Council did not meet in March. So many ministries, so many preparations for Holy Week, and so many events were going on that our focus on those things became paramount. No pressing items had been presented for Council consideration. More familiar matters such as approval of the financials will be taken up at the Council meeting scheduled for April 24, 2026.

The entire Council prays that you may be showered by the blessings of Easter and that the presence of Christ in you, with you, beside you, above you, below you and surrounding you may give you great joy and peace.

Happy Easter!

Alison Schuler, President

### Happy Birthday

- 1 Joaquin Ortega
- 4 Cheryl Heise
- 5 Judith Stocum
- 6 Mary Fidler
- 6 Liam Tierney
- 7 Gayle Carleton
- 8 Kali Baros
- 9 Brent Meyer
- 11 Betty Ann Arner
- 11 Sean Scott
- 12 Bob Thornton
- 13 Leondra Schuler
- 14 Denny Krenz
- 19 Nancy O'Dell
- 20 Shannon Guericke
- 20 Paul Lopez
- 22 Rick Parker
- 23 Scott Strandberg



### Wedding Anniversaries

- 4 Ben & Bev Larzelere
- 14 Carol & Mike Abramovich
- 16 Spencer & Cheryl Gerwin
- 18 Pamela & Peter Makarenko
- 19 George & Carol Allen

### Youth Baptism Anniversary

- 18 Summer Roesler
- 29 Hazel Trujillo
- 30 Emory James



# St. Luke Preschool

## Growing with God Since 1956

(505) 292-8812 | STLUKESC@thuntek.net | stlukepreschool.org



During our recent celebration of **Lutheran Schools Week**, we were thrilled for volunteer guest story readers to visit the classrooms. Thank you to Betty Ann Arner, Allie Brandt, Diane Follstaedt, Jean Hollowwa, Leondra Schuler, Holly Trujillo and Marge Zinser-Knorovsky for sharing this beautiful gift with us!



Other highlights of this special week included our **Family Literacy Night** and the **Scholastic Book Fair**, both of which brought preschool families together.

We are grateful for the kind volunteers who gave of their time to make it all happen!

Thank you to: Michelle Barba, Allie Brandt, Jane Clinger, Joel Clinger, Les Clinger, Dusty Erven, Mary Fidler, Sarah Jane Kipp, Christian Joe, Daniel Perea, Diane Quarles, Sally Quintana, Alison Schuler, Shannon Stanley, Holly Trujillo, Myah Wheeler, and Marge Zinser-Knorovsky.

### Did You Know...

St. Luke Lutheran Church began a kindergarten class for congregation members in 1956. From that single class grew a Christian preschool and extended care program that serves children ages 2-5.

We are honored and blessed to share the love of God with the children and their families.

CELEBRATING 70  
WONDERFUL YEARS!



**With the whole people of God in Christ Jesus, let us pray for the church, those in need, and all of God's creation.**

**For the church universal, its ministry, and the mission of the gospel -**

*The Lord is my light and my salvation; whom shall I fear? The Lord is the stronghold of my life; of whom shall I be afraid? - Psalm 27:1*

† Presiding Bishop Yehiel Curry, Synod Bishop Meghan Aelabouni and the work of the Rocky Mountain Synod and its ministries

† Navajo Lutheran Mission at Rock Point, Arizona; Luther House UNM & CNM Campus

† ELCA Missionary Carolyn Schneider serving in Guyana

† ELC in Jordan and the Holy Land and its ministries; and for her bishops and clergy seeking peace together with the Rabbis of Israel

† Praying for open doors for the Gospel in the midst of persecution and conflicts, such as in Europe, East Asia and Middle East

**For peace and justice in all the nations; for communities; for those in authority -**

*For he (the Lord) will hide me in his shelter in the day of trouble; he will conceal me under the cover of his tent; he will lift me high upon a rock. - Psalm 27:5*

† Clinton Eaton and all military who serve [O LORD God of Hosts, stretch forth, we pray, your almighty arm to strengthen and protect the military of our country. Support them in the day of battle, and in the time of peace keep them safe from all evil; endue them with courage and loyalty; and grant that in all things they may serve without reproach; through Jesus Christ our Lord. Amen.]

† Replace fear, anger and self-interest with trust in the Lord, love and grace.

† Bucket of Change recipient for April: Greater Albuquerque Habitat for Humanity

† Turning back to Jesus, our Lord, healing for our country, preservation of families, Godly direction and leadership models for our youth, God's peace and unity for his people

**For the sick, hospitalized, or recovering -**

*Hear, O Lord, when I cry aloud; be gracious to me and answer me! - Psalm 27:7*

† Leya (toddler), Terry Shirrod, Stephensons' Lodge brother's wife, Frank Johnson, Lindsey, Clare Castiglia, Julie, Wallace, Terry, Diane, Bonnie, & Marjorie Kendrick; Sam, Noel, Larry, Sally Meeks, Betty Ann Arner, Myra Lynch, Ray Prudhomme, Don Edwards, Steve, Dan Syroid, Jean Klinke, Lola, Andy H., Aleta, Bonnie Paine, John English, Renae Brauer, Callie Coughenour, Kurt Coughenour

† In hospice care: Verne

**For all with special concerns, and who suffer in body, mind, or spirit -**

*Wait for the Lord; be strong, and let your heart take courage; wait for the Lord! - Psalm 27:14*

† Michael and wife Dasha, that they would come to acknowledge Christ as their savior and master and redeemer; Dave Dehart (near death), Pamela, Sonny Traeger, Paul & wife Bonnie, Burke family, Julie, Jerry, Pamela, and Erica; Tamairn Reinardson, Levi Cross, Dave, Melissa & her unborn baby, who is expected very soon; Yolanda, Shelly, Julian, Rogene & Peter, Margaret, newlyweds Brian & Jessica Exley, Lisa W's husband, Jamie M.

† Persecuted church, children, and elderly in the midst of conflicts in the Middle East.

† We pray for the Afghan family that St. Luke sponsored, that the father's work permit be restored so that they can support themselves and live productive lives in Albuquerque

† Aging parents and their caregivers

† Those who are grieving the loss of their loved ones: Family of Valerie Trujillo, upon her death on March 17; Michelle & Victor Barba and family, upon the death of Victor's mother Magdalena Barba on March 14; Emily, Seth, and Nora upon the loss of baby brother and son Logan; Family of Diane Hamilton, upon her death

† Those who are homebound in our church family: Polly Brodbeck, Melda Burns, Leah Coughenour, Dorela Cole, Karin Duda, Kay Dunbar, Lucille Few, Fern Knudsen, Marie Lenard, Marv Plugge, Loretta Roe, Liz Wills

**For the congregation and for special concerns -**

*Teach me your way, O Lord, and lead me on a level path because of my enemies. - Psalm 27:11*

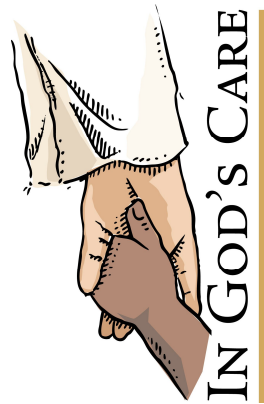
† Interim Pastor Brad and ministry/committee leaders, and staff

† Church Council and Call Committee

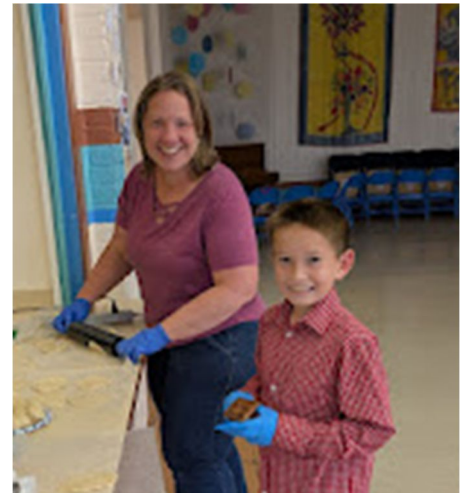
† St. Luke Preschool and children & their families

**Into your mercy, Lord, we commend ourselves and all for whom we pray, trusting always in your mercy and love for us, through Jesus Christ our Lord. Amen.**

*Please submit your prayer requests to PrayerChain@StLukeABQ.org or contact the church office. In the absence of any updates, names will remain on the prayer list for a month.*



# Faith Stepping Stones: Holy Communion



# Palm/Passion Sunday



## ST. LUKE LUTHERAN CHURCH

*A congregation of the ELCA Rocky Mountain Synod*

The Rev. Yehiel Curry, *ELCA Presiding Bishop*

The Rev. Dr. Meghan Johnston Aelabouni,  
*Synod Bishop*

The Rev. Dr. Brad Brauer, *Interim Pastor*

Michelle Barba, *Business Manager*

Allie Brandt, *Multi-Generational Ministries Coordinator*

Danielle Cordova, *Music Ministries Coordinator*

Pamela Franco, *Media Ministry Assistant*

Precious Goodhart, *Nursery Care on Saturday*

Taylor Hollowwa, *Nursery Care on Sunday*

Angie Miller, *Church Office Manager, Ministry Assistant,*  
*Horizon newsletter Editor*

Pro-Team Cleaning & Maintenance, (*Victor Barba &*  
*Jonathan Barba*) *Custodians*

## Church Council

(Email: [Council@StLukeABQ.org](mailto:Council@StLukeABQ.org))

Alison Schuler: *Council President; Preschool Committee*

DeAnn Eaton Azar: *Vice-President; Finance Secretary*

Gil Quintana: *Council Secretary; Preschool; Music*

The Rev. Dr. Brad Brauer, *Interim Pastor*

Cindy Callisto: *Assistant Secretary; Nominating*

*Committee Chair; Worship Assistant*

Greg Haschke: *Stewardship; Sanctuary Choir*

Judy Moore: *Treasurer; Finance; Budget; Personnel;*

*Stewardship; Godly Play; Learners & Servers*

## Standing Committees

Children, Youth & Family

Finance

Personnel

Preschool

Property

Stewardship

Trust

Worship, Music & the Arts



## St. Luke Preschool

Phone: (505) 292-8812

E-mail: [stlukesc@thuntek.net](mailto:stlukesc@thuntek.net)

Website: [www.stlukepreschool.org](http://www.stlukepreschool.org)

Lori Erven, *Director*

Jane Clinger,

*Office Administrator*

*Growing with God*



St.LukePreschool

## Horizon Newsletter

is a monthly publication of

ST. LUKE EVANGELICAL LUTHERAN CHURCH

9100 Menaul Blvd. NE, Albuquerque, NM 87112

Phone (505) 299-2621

E-mail: [stluke@thuntek.net](mailto:stluke@thuntek.net)

Website: [stlukeabq.org](http://stlukeabq.org)

## Publication Deadlines:

*Please send articles/items to the church office, c/o Angie Miller at [stluke@thuntek.net](mailto:stluke@thuntek.net).*

- Articles & items for the monthly Horizon newsletter & calendar: 15th of the month
- Items for the weekly St Luke GPS, by noon of Wednesday prior to the upcoming weekend